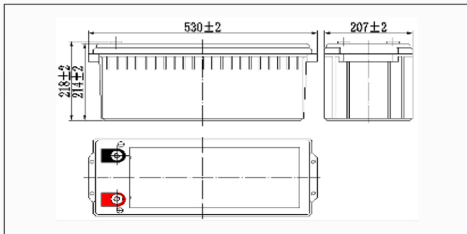


INBA12200 12V-200Ah

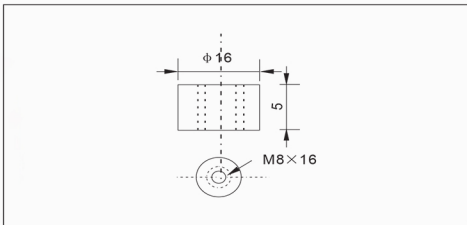
● Specifications

Nominal Voltage	12V	
Rated capacity (20 hour rate)	200Ah	
Dimensions	Length	522±2mm(20.55inch)
	Width	238±2mm(9.37inch)
	Height	218±2mm(8.58inch)
	Total Height	222±2mm(8.74inch)
Approx. Weight	54.0kg(119.05lbs) ±3%	

● Outer dimensions (mm)



● Terminal Type (mm)



● Construction

Component	Positive plate	Negative plate	Container	Cover	Separator	Electrolyte	Safety valve	Terminal
Raw material	Lead dioxide	Lead	ABS	ABS	AGM	Sulfuric acid	Rubber	Copper

● Constant Current Discharge Characteristics Unit:A(25°C,77°F)

F.V/Time	15min	30min	60min	2h	3h	4h	5h	6h	8h	10h	20h
9.60V	313	187	115	69.4	50.0	39.9	34.1	29.7	23.4	19.3	10.3
9.90V	305	183	113	69.0	49.7	39.7	33.9	29.5	23.3	19.3	10.2
10.2V	294	178	110	68.4	49.4	39.4	33.7	29.3	23.2	19.2	10.2
10.5V	284	173	107	67.4	49.0	39.1	33.4	29.1	23.0	19.1	10.1
10.8V	269	167	104	65.7	47.5	38.0	32.44	28.2	22.3	19.0	10.1

● Constant Power Discharge Characteristics Unit:A(25°C,77°F)

F.V/Time	15min	30min	60min	2h	3h	4h	5h	6h	8h	10h	20h
9.60V	3435	2100	1312	804	588	469	403	350	279	231	123
9.90V	3352	2058	1292	799	585	467	301	348	277	230	123
10.2V	3229	1995	1259	792	581	464	398	346	275	230	122
10.5V	3119	1946	1220	780	576	460	395	344	273	228	122
10.8V	2954	1875	1181	760	559	446	383	333	265	227	121

Note: The above characteristics data can be obtained within three charge or discharge cycles.

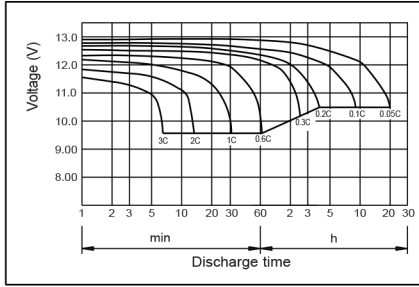


● Characteristics

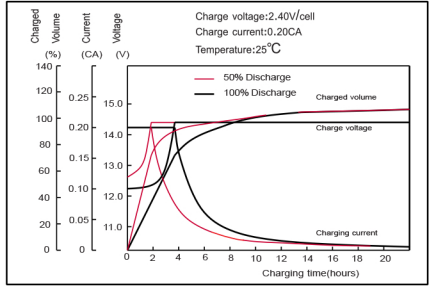
Capacity (25°C)	20HR(10.8V)	200Ah
	3HR(10.8V)	142.5Ah
	1HR(10.5V)	104Ah
Terminal type		T16
Internal resistance (Fully charged,25°C)		Approx. 3.7m Ω
Capacity affected by temperature (10HR)	40°C	102%
	25°C	100%
	0°C	85%
	-15°C	65%
Self-discharge (25°C)	3month	Remaining Capacity:91%
	6month	Remaining Capacity:82%
	12month	Remaining Capacity:65%
Nominal operating temperature		25°C ±3°C(77°F ±5°F)
Operating temperature range	Discharge	-15°C~50°C(5°F~122°F)
	Charge	-10°C~50°C(14°F~122°F)
	Storage	-20°C~50°C(-4°F~122°F)
Float charging voltage(25°C)	13.50 to 13.80V Temperature compensation: -18mV/°C	
Cyclic charging voltage(25°C)	14.50 to 15.00V Temperature compensation: -30mV/°C	
Maximum charging current	54A	
Terminal material	Copper	
Maximum discharge current	1200A(5 sec.)	
Designed floating life(20°C)	10years	

INBA12200 12V-200Ah

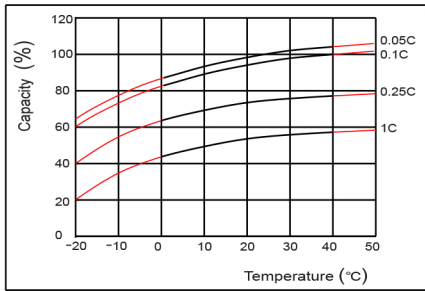
● Discharge characteristics(25°C)



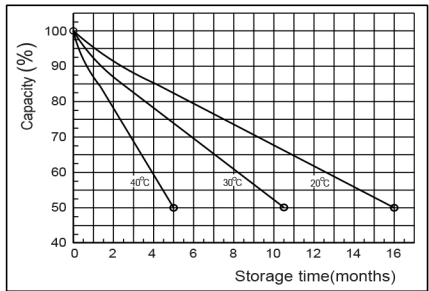
● Charging characteristics (25°C)



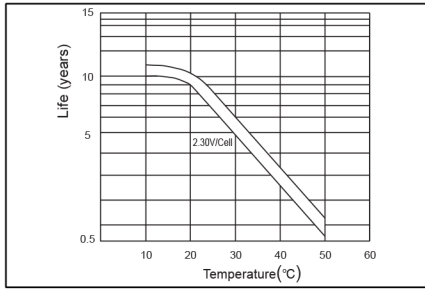
● Temperature effects on Capacity



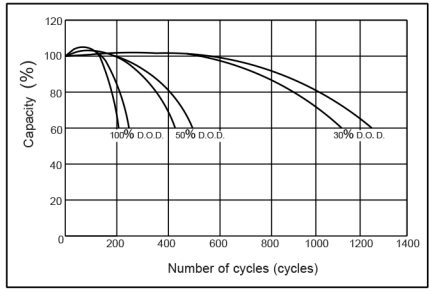
● Self-discharge characteristics



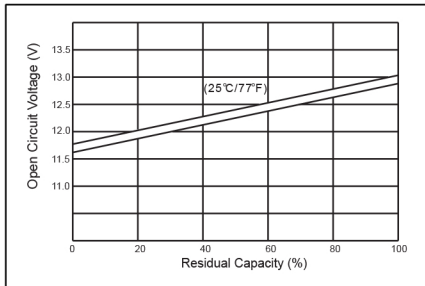
● Floating life on Temperature



● Cycle life on D.O.D (25°C)



● The relationship for OCV and Capacity (25°C)



● The relationship for Charging voltage and Temperature

